

BAS16WS

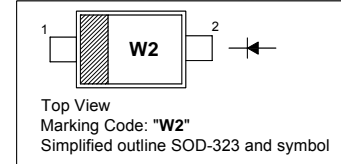
Silicon Epitaxial Planar Switching Diode

Features

- Fast switching diode

PINNING

PIN	DESCRIPTION
1	Cathode
2	Anode

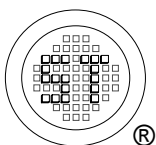


Absolute Maximum Ratings ($T_a = 25\text{ }^\circ\text{C}$)

Parameter	Symbol	Value	Unit
Reverse Voltage	V_R	75	V
Peak Reverse Voltage	V_{RM}	100	V
Forward Current (Continuous)	I_F	250	mA
Non-repetitive Peak Forward Surge Current	I_{FSM}	0.5 1 2	A
		at $t = 1\text{ s}$	
		at $t = 1\text{ ms}$	
		at $t = 1\text{ }\mu\text{s}$	
Power Dissipation	P_{tot}	200	mW
Junction Temperature	T_j	150	$^\circ\text{C}$
Storage Temperature Range	T_{stg}	- 65 to + 150	$^\circ\text{C}$

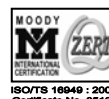
Characteristics at $T_a = 25\text{ }^\circ\text{C}$

Parameter	Symbol	Max.	Unit
Forward Voltage	V_F	0.715	V
at $I_F = 1\text{ mA}$		0.855	
at $I_F = 10\text{ mA}$		1	
at $I_F = 50\text{ mA}$		1.25	
Reverse Leakage Current	I_R	1	μA
at $V_R = 75\text{ V}$		30	
at $V_R = 25\text{ V}, T_J = 150\text{ }^\circ\text{C}$		50	
Diode Capacitance	C_{tot}	2	pF
at $V_R = 0\text{ V}, f = 1\text{ MHz}$			
Reverse Recovery Time	t_{rr}	6	ns
at $I_F = 10\text{ mA}$ to $I_R = 10\text{ mA}, I_R = 1\text{ mA}, R_L = 100\text{ }\Omega$			



SEMTECH ELECTRONICS LTD.

(Subsidiary of Sino-Tech International Holdings Limited, a company listed on the Hong Kong Stock Exchange, Stock Code: 724)



ISO/TS 18949:2002
Certificate No. 08103



ISO 14001:2004
Certificate No. 7116



ISO 9001:2000
Certificate No. 0808098



BS-OHSAS 18001:2007
Certificate No. 7116



IECQ QC 080000
Certificate No. 7116

Dated : 15/06/2009

BAS16WS

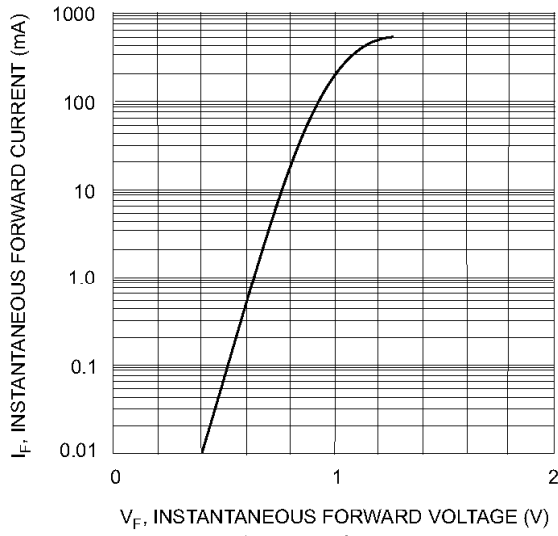


Fig. 1 Forward Characteristics

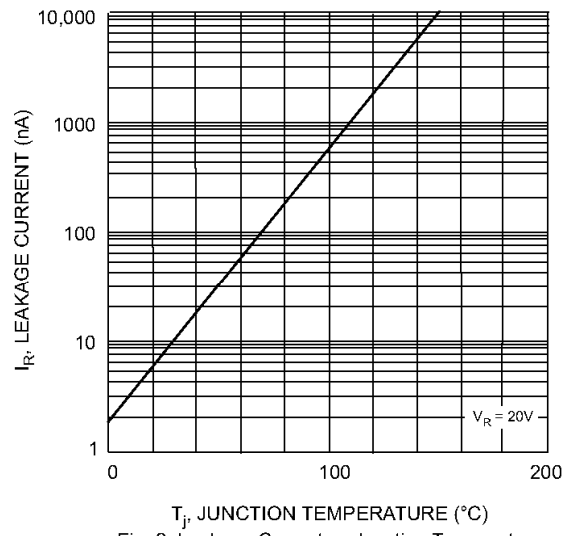
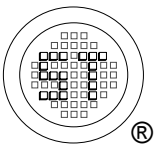


Fig. 2 Leakage Current vs Junction Temperature



SEMTECH ELECTRONICS LTD.
 (Subsidiary of Sino-Tech International Holdings Limited, a company listed on the Hong Kong Stock Exchange, Stock Code: 724)

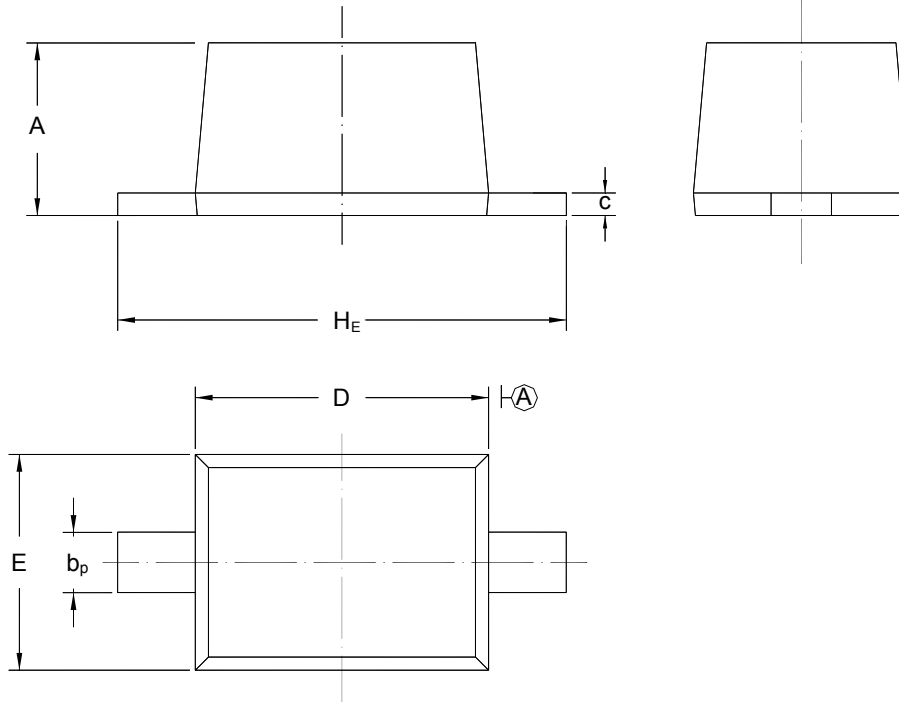


BAS16WS

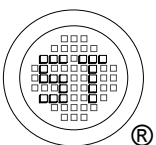
PACKAGE OUTLINE

Plastic surface mounted package; 2 leads

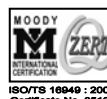
SOD-323



UNIT	A	b _p	C	D	E	H _E
mm	1.10 0.80	0.40 0.25	0.15 0.00	1.80 1.60	1.35 1.15	2.80 2.30



SEMTECH ELECTRONICS LTD.
 (Subsidiary of Sino-Tech International Holdings Limited, a company
 listed on the Hong Kong Stock Exchange, Stock Code: 724)



ISO/TS 16949:2002
 Certificate No. 05103

ISO 14001:2004
 Certificate No. 7116

ISO 9001:2000
 Certificate No. 050059

BS-OHSAS 18001:2007
 Certificate No. 7116

IECQ QC 080000
 Certificate No. 7116

Dated : 15/06/2009